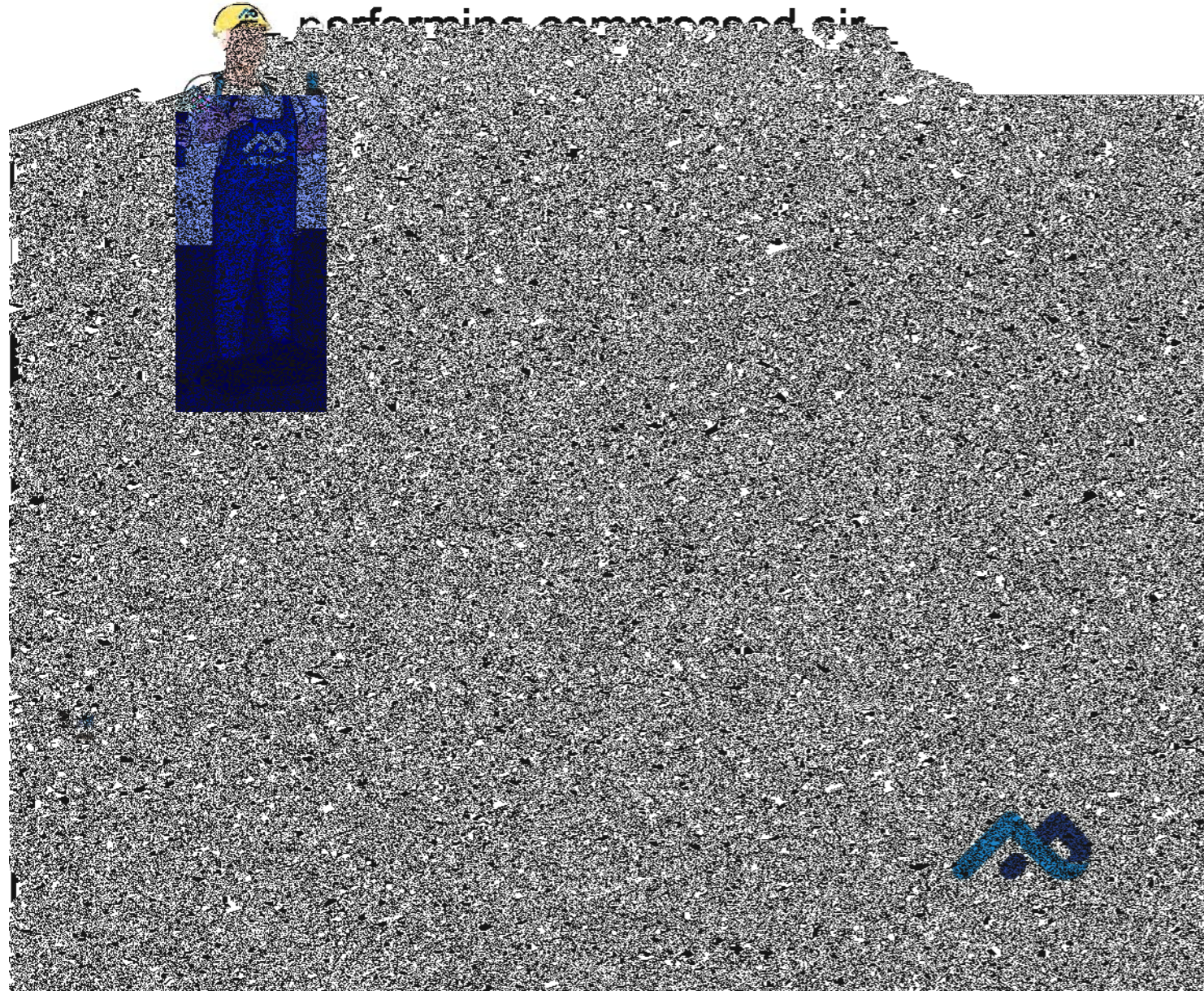
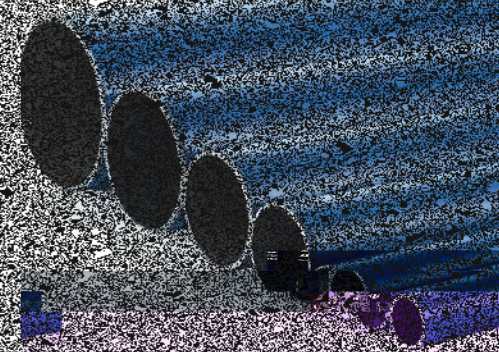
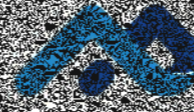
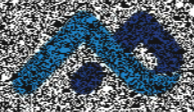


We provide superior
performing compressed air



ENGINEERED FOR SUPERIOR PERFORMANCE



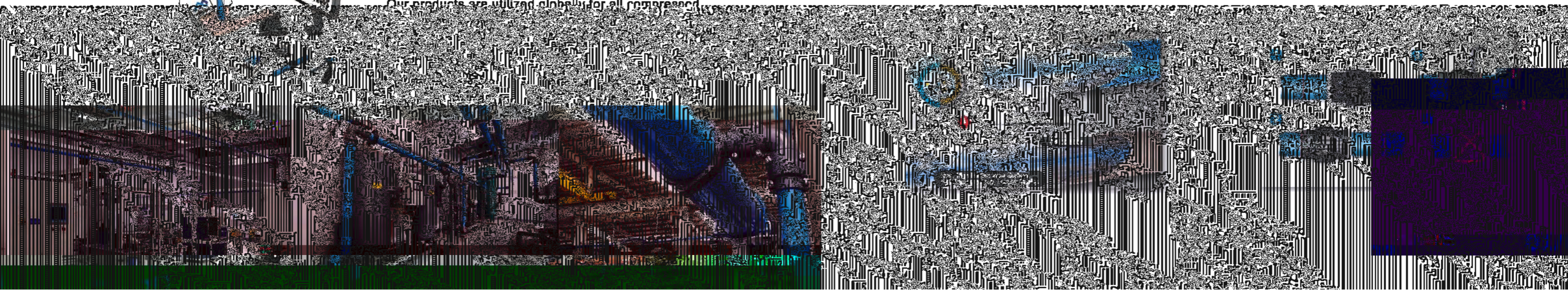


AIRpipe specializes in solutions for compressed air and fluids distribution. Through out the last 12 years, we have continued to invest in R&D, by taking into account market feedback and real-world conditions, our technology has gone through several stages of evolution. Today the new generation of products are engineered to be the most superior products available.

More than 31,000m2 layout, 100% ownership of manufacturing plants, R&D center, office, logistic center. We're committed to your total solution provider for products, system design, engineering proposal and installations.



Our products are utilized globally for all compressed



Superior Reliability & Longevity

- Highly durable materials resistant to corrosion, vibration, thermal variation, and outdoor weather conditions.
- Metal clamshell connectors for all diameters are stronger and more durable versus polymer fittings.
- Unique grab ring design (20-50mm) and lugged ring (63-200mm) allows for zero risk of disconnection.
- Patented active concentric seals provide leak free performance, even in high vibration applications. Seal lifespan is double that of industry competitors.

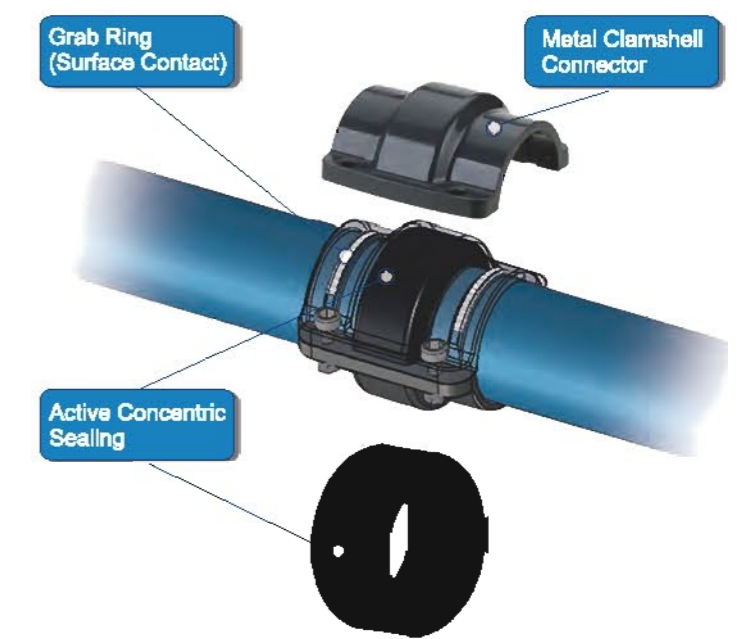


Energy & Cost Savings

- The smooth interior design and high-flow connectors ensures a constant supply of clean air at a reduced pressure drop, resulting in significant energy savings.
- Guaranteed leak-free performance and superior longevity versus traditional pipe systems.

Quick & Easy Modular Installation

- Complete range of pipe, fittings and accessories works easily for new projects renovations & extensions.
- Requires no special tooling, welding, gluing, brazing, soldering, or thread cutting.
- Reusable, lightweight, and modular design allows for easy modifications.
- Quick drops can be added at any time to create new points of use.

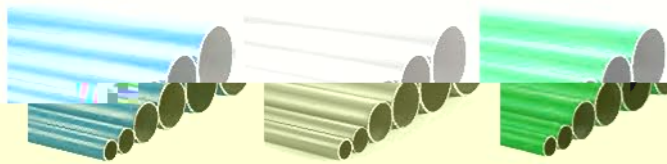


Dual Performance

- Surface contact and active sealing
- Working Pressure up to 16bar
- 20 year life

Product Range & Features

Light Aluminum Pipe



- Up to max.200mm diameter - 200m³/min flow single line.
- High-quality powder coating and colors customization.
- Designed for compressed air, vacuum, and inert gases.
- Light-weight & corrosion-free.

Ball & Butterfly Valves



- Quick connection.
- Available for BSP/NPT thread, flange, plug-in connection type.
- High-flow design ensures optimal performance.

Pipe Connectors



Flexible Hoses



BLUE ALUMINUM PIPE

5.8M Length

AIRpipe	DN	OD	ID
301 00 0100 01	20	20.1	17.5
301 00 0200 01	25	25.1	22.5
301 00 0400 01	40	40.1	38.5
301 00 0500 01	50	50.1	45.7
301 00 0600 01	63	67.6	63.0
301 00 0700 01	80	84.8	80.0
301 00 0800 01	100	101.8	96.8
301 00 0900 01	150	153.0	147.5
301 00 1000 01	200	205.0	197.8

* 2.9M length please contact local sales.

GREEN ALUMINUM PIPE

5.8M Length

AIRpipe	DN	OD	ID
301 00 0100 03	20	20.1	17.5
301 00 0200 03	25	25.1	22.5
301 00 0400 03	40	40.1	36.5
301 00 0500 03	50	50.1	45.7
301 00 0600 03	63	67.6	63.0
301 00 0700 03	80	84.8	80.0
301 00 0800 03	100	101.8	96.8
301 00 0900 03	150	153.0	147.5
301 00 1000 03	200	205.0	197.8

* 2.9M length please contact local sales.

EQUAL 90° ELBOW

AIRpipe	DN
302 03 0100 02	20
302 03 0200 02	25
302 03 0400 02	40

GRAY ALUMINUM PIPE

5.8M Length

AIRpipe	DN	OD	ID
301 00 0100 02	20	20.1	17.5
301 00 0200 02	25	25.1	22.5
301 00 0400 02	40	40.1	36.5
301 00 0500 02	50	50.1	45.7
301 00 0600 02	63	67.6	63.0
301 00 0700 02	80	84.8	80.0
301 00 0800 02	100	101.8	96.8
301 00 0900 02	150	153.0	147.5
301 00 1000 02	200	205.0	197.8

* 2.9M length please contact local sales.

END CAP

AIRpipe	DN
302 06 0100 02	20
302 06 0200 02	25
302 06 0400 02	40
302 06 0500 02	50

*Union connector included

302 06 0600 01	63
302 06 0700 01	80
302 06 0800 01	100
302 06 1000 01	150
302 06 1100 01	200

*Use one union connector

REDUCING TEE

AIRpipe	DN	DN
302 07 0201 02	25	20
302 07 0402 02	40	25

EQUAL PIPE TO PIPE CONNECTORS

AIRpipe	DN
32 02 0100 01	20
32 02 0200 01	25
32 02 0400 01	40
32 02 0500 01	50
32 02 0601 05	63
32 02 0701 08	80
32 02 0801 08	100
32 02 1001 05	150
32 02 1101 05	200

EQUAL TEE

AIRpipe	DN
32 05 0100 02	20
32 05 0200 02	25
32 05 0400 02	40
32 05 0500 02	50

Union connectors included

32 05 0600 01	63
32 05 0700 01	80
32 05 0800 01	100
32 05 1000 01	150
32 05 1100 01	200

Use three union connectors

REDUCING PIPE TO PIPE CONNECTORS

AIRpipe	DN	DN
302 21 0201 02	25	20
302 21 0402 02	40	25
302 21 0502 02	50	25
302 21 0504 02	50	40
302 21 0604 02	63	40
302 21 0605 02	63	50
302 21 0705 02	80	50

*Union connectors size below 63 included

302 21 0706 01	80	63
302 21 0808 01	100	63
302 21 0807 01	100	80
302 21 1007 01	150	80
302 21 1008 01	150	100

ALUMINUM JOINT MALE THREAD

AIRpipe	BSP	DN	Size
302 17 0100 02	20	1/2"	
302 17 0101 02	20	3/4"	
302 17 0200 02	25	1/2"	
302 17 0201 02	25	3/4"	
302 17 0202 02	25	1"	
302 17 0402 02	40	1"	
302 17 0403 02	40	1 1/4"	
302 17 0404 02	40	1 1/2"	
302 17 0405 01	40	2"	
302 17 0504 02	50	1 1/2"	
302 17 0505 02	50	2"	
*Union connector Included			
302 17 0605 01	63	2"	
302 17 0806 01	63	2 1/2"	
302 17 0706 01	80	2 1/2"	
302 17 0707 01	80	3"	
*Use one union connector			

QUICK DROP

ALUMINUM ELBOW MALE

AIRpipe	BSP	DN	Size
302 15 0100 01	20	1/2"	
302 15 0101 01	20	3/4"	
302 15 0200 01	25	1/2"	
302 15 0202 01	25	1"	
302 15 0404 01	40	1 1/4"	
302 15 0505 01	50	2"	
*Union connector Included			
ALUMINUM ELBOW FEMALE			
AIRpipe	BSP	DN	Size
302 13 0100 01	20	1/2"	
302 13 0101 01	20	3/4"	
302 13 0200 01	25	1/2"	
302 13 0202 01	25	1"	
302 13 0404 01	40	1 1/4"	
302 13 0505 01	50	2"	
*Union connector Included			

QUICK DROP FEMALE THREAD

AIRpipe	BSP	DN	Size
302 11 0200 03	25	1/2"	
302 11 0400 03	40	1/2"	
302 11 0401 03	40	3/4"	

VALVED WALL BRACKET FEMALE THREAD

AIRpipe	DN	BSP	Ports
302 52 0102 03	20	1 PORT 1/2"	
302 52 0202 03	25	1 PORT 1"	
302 52 0204 03	25	1 PORT 1/2"	
302 52 0404 03	40	1 PORT 1 1/4"	
302 52 0505 03	50	1 PORT 2"	
302 52 0606 01	63	1 PORT 2 1/2"	

*Union connector Included

AIRpipe	DN	BSP	Ports
302 52 0101 03	20	2 PORTS 1/2"	
302 52 0201 03	25	2 PORTS 1/2"	

*Union connector Included

AIRpipe	DN	BSP	Ports
302 52 0105 03	20	2 PORTS 1/2", 75°	
302 52 0205 03	25	2 PORTS 1/2", 75°	

*Union connector Included

BRASS BASE VALVE

SWING CHECK VALVE

AIRpipe	BSP	DN	Type
302 80 0400 02	40	Cast iron	
302 80 0500 02	50	Cast iron	

*Union connectors Included

302 80 0600 01	63	Cast iron	
302 80 0700 01	80	Cast iron	
302 80 0800 01	100	Cast iron	
302 80 1000 01	150	Cast iron	
302 80 1100 01	200	Cast iron	

*Use two union connectors

AIRpipe	BSP	DN	Type
302 80 0401 02	40	Stainless steel	
302 80 0501 02	50	Stainless steel	

*Union connectors included

302 80 0601 01	63	Stainless steel	
302 80 0701 01	80	Stainless steel	
302 80 0801 01	100	Stainless steel	
302 80 1001 01	150	Stainless steel	
302 80 1101 01	200	Stainless steel	

*Use two union connectors

FLANGE

All flanges contain bolts and flange gasket

AIRpipe	BSP	DN	Size
302 70 0600 01	63	65	
302 70 0700 01	80	80	
302 70 0800 01	100	100	
302 70 1000 01	150	150	
302 70 1100 01	200	200	

FLANGE(CAST IRON) FEMALE THREAD

All flanges contain bolts and flange gasket

AIRpipe	BSP	DN	Size
302 79 0202 01	25	1"	
302 79 0404 01	40	1 1/4"	
302 79 0505 01	50	2"	
302 79 0602 01	65	1"	
302 79 0804 01	85	1 1/4"	
302 79 0805 01	65	2"	
302 79 0702 01	80	1"	

FLEXIBLE HOSES

Straight connection, Rubber

AIRpipe	DN	Length (MM)
302 55 0100 04	20	570
302 55 0200 04	25	570
302 55 0400 04	40	800
302 55 0500 04	50	600

*Unions connectors Included

30°Angle connection, Rubber

AIRpipe	DN	Length (MM)
302 55 0401 04	40	1200
302 55 0501 04	50	1380
301 55 0601 01	63	1200
301 55 0701 01	80	1700
301 55 0801 01	100	1700

*Union connectors Included

Straight connection, metal

AIRpipe	DN	Length (MM)
301 55 0501 01	50	570
301 55 0601 01	63	570
301 55 0701 01	80	800
301 55 0801 01	100	600

FIXTURE CLAMPS & ACCESSORIES

Clamps, Plastic

AIRpipe	DN
302 22 0100 01	20
302 22 0200 01	25
302 22 0400 01	40
302 22 0500 01	50
302 22 0600 01	63
302 22 0700 01	80
302 22 0800 01	100

Steel

AIRpipe	DN
302 22 0401 01	40
302 22 0501 01	50
302 22 0601 01	63
302 22 0701 01	80
302 22 0801 01	100
302 22 1001 01	150
302 22 1101 01	200

CLAMP SPACER

AIRpipe	DN
302 27 0001 01	20/25
302 27 0002 01	40/50/63

VORTEX FLOW METER

AIRpipe	DN
302 82 0100 02	20
302 82 0200 02	25
302 82 0400 02	40
302 82 0500 02	50

*Union connectors included

302 82 0600 01	63
302 82 0700 01	80
302 82 0800 01	100
302 82 1000 01	150

THREADED ADAPTORS

Aluminum, Male Thread *Male Thread

AIRpipe	BSP	1/2"	3/4"
301 31 0000 01		1/2"	1/2"
301 31 0100 01		3/4"	3/4"
301 31 0200 01		1"	1"
301 31 0400 01		1 1/2"	1 1/2"
301 31 0500 01		2"	2"

Aluminum, Male Thread *Female Thread

AIRpipe	BSP	1 1/2"	1"
301 31 0400 02		1 1/2"	1"
301 31 0500 02		2"	1"
301 31 0500 03		2"	1 1/2"
301 31 0600 01		2 1/2"	1"
301 31 0600 02		2 1/2"	2"
301 31 0700 01		3"	1"
301 31 0700 02		3"	1 1/2"
301 31 0700 03		3"	2"
301 31 0700 04		3"	2 1/2"
302 31 0000 04		1/2"	1/2"
302 31 0000 03		1/2"	3/4"
302 31 0100 03		3/4"	1/2"
302 31 0200 03		1"	1/2"

Brass, Male Thread *Male Thread

AIRpipe	BSP	1/2"	3/4"
302 31 0000 02		1/2"	3/4"
302 31 0100 02		3/4"	1/2"
302 31 0200 02		1"	3/4"

PRESSURE METER

AIRpipe	BSP	Male W*, (shock resistance), 0-1.6mpa, 1.6grade
301 34 0001 01		

ATMOLYSIS BAG

AIRpipe	BSP	Length (MM)
301 85 0001 01		200
301 85 0002 01		300
301 85 0003 01		400

* 4 1/2" aside outlet

SAMPLE BOX

AIRpipe	200x270x190mm
302 46 0001 01	

TOOL BOX

AIRpipe	460x330x140mm
301 45 0001 02	

* Items supplied in airpipe tool bag

DRILL (TAPPER)

AIRpipe	DN	14MM	19MM	25MM	38MM	51MM	16MM	22MM
301 35 0006 01		14MM						
301 35 0006 02			19MM					
301 35 0006 03				25MM				
301 35 0006 04					38MM			
301 35 0006 05						51MM		
301 35 0006 06							16MM	
301 35 0006 07								22MM

DRILL HOLDER

AIRpipe	DN	14-30	32-152
301 35 0005 01		14-30	
301 35 0005 02			32-152

MARKER

AIRpipe	120 44 0005 02
120 44 0005 02	

ALUMINUM PIPE DEBURRER

AIRpipe	DN	20-50
301 35 0003 01		20-50

SPANNERS

AIRpipe	301 35 0007 01
301 35 0007 01	

ALUMINUM PIPE CUTTER

AIRpipe	DN	Aluminum pipe cutter, 20-63	Aluminum pipe cutter, 40-100	0040 Aluminum pipe cutter blade	0140 Aluminum pipe cutter blade
301 35 0002 02		Aluminum pipe cutter, 20-63			
301 35 0002 03			Aluminum pipe cutter, 40-100		
301 35 0002 04				0040 Aluminum pipe cutter blade	
301 35 0002 05					0140 Aluminum pipe cutter blade

ELECTRIC PIPE CUTTER

AIRpipe	DN	83-200
301 35 0001 01		83-200

FIXING BOLT

AIRpipe	DN	M8*60	M8*90	M8*70
301 33 0004 01		M8*60		
301 33 0004 02			M8*90	
301 33 0004 03				M8*70

SQUARE STEEL

ADJUSTABLE BRACKET

AIRpipe	Length (MM)	to suit
301 32 0004 01	1200-2400	Threaded
301 32 0005 01	1800-2000	Flange

GRIDER CLAMP

AIRpipe	M8
301 33 0003 01	M8

SQUARE STEEL CLAMP

AIRpipe	301 33 0002 01
301 33 0002 01	

PIPE BENDING TOOL

AIRpipe	DN	20	25
301 47 0001 01		20	
301 47 0002 01			25

*Bending Angle: MAX.90°

M8 STUB

AIRpipe	Length (MM)	40	3000
301 33 0006 01		40	
301 33 0005 01			3000

Complete With Plastic Wall Plugs

AIRpipe	DN
---------	----

WALL MOUNTED BRACKET

AIRpipe	Length (MM)	300	500	1200	Suit to DN150/ DN200 pipe
301 32 0000 01		300			
301 32 0001 01			500		
301 32 0002 01				1200	
301 32 0006 01					Suit to DN150/ DN200 pipe

UNIVERSAL BEAM SUSPENDER

AIRpipe	M6	M8
301 33 0014 01	M6	M8

FIXTURE CLAMPS & ACCESSORIES

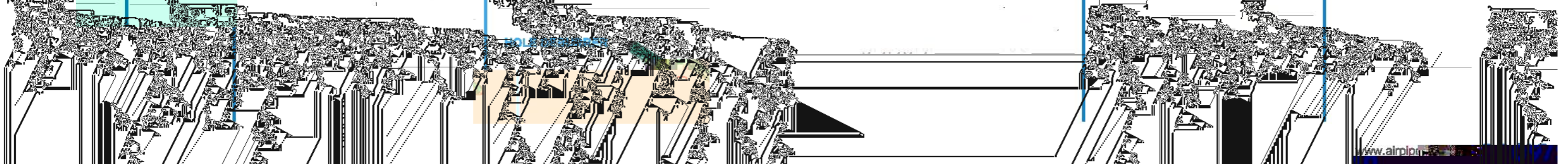
AIRpipe	DN	1"	2"
301 33 0013 01		1"	
301 33 0013 02			2"

WIRE SUSPENSION CABLE

AIRpipe	Length (MM)	Φ12
301 33 0010 02		Φ12

AIRpipe	Suit to	Φ12 wire Cable	Φ12 wire Cable
301 33 0012 02		Φ12 wire Cable	
301 33 0011 02			Φ12 wire Cable

LUGGING MACHINE



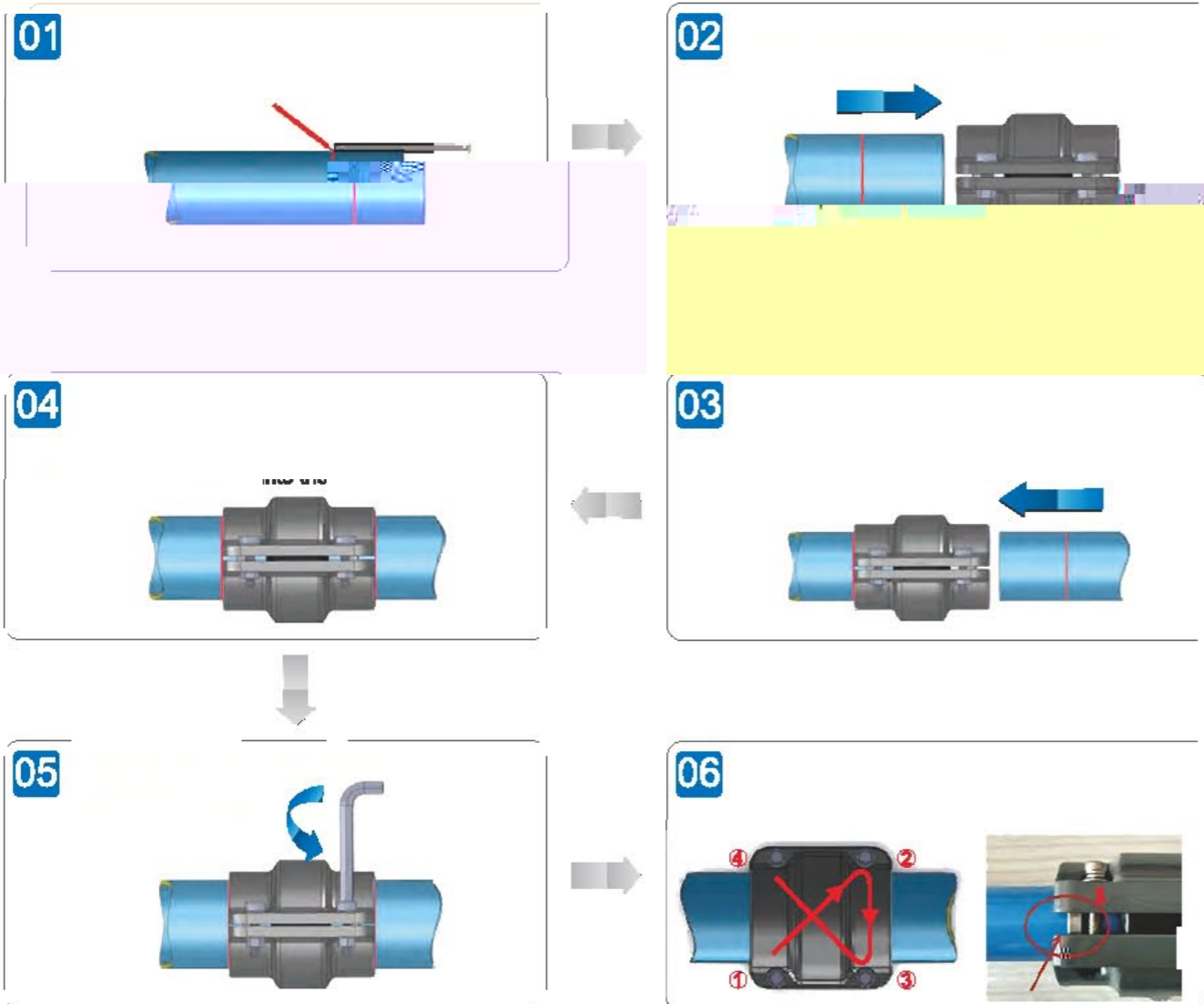
Superior Reliability!



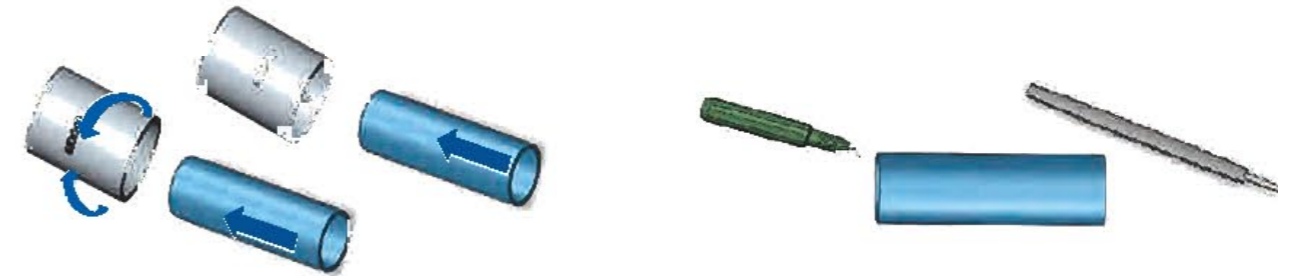
Insertion Depth S For DN20-DN50 Connector

DN	Insertion depth S (mm)
50	29

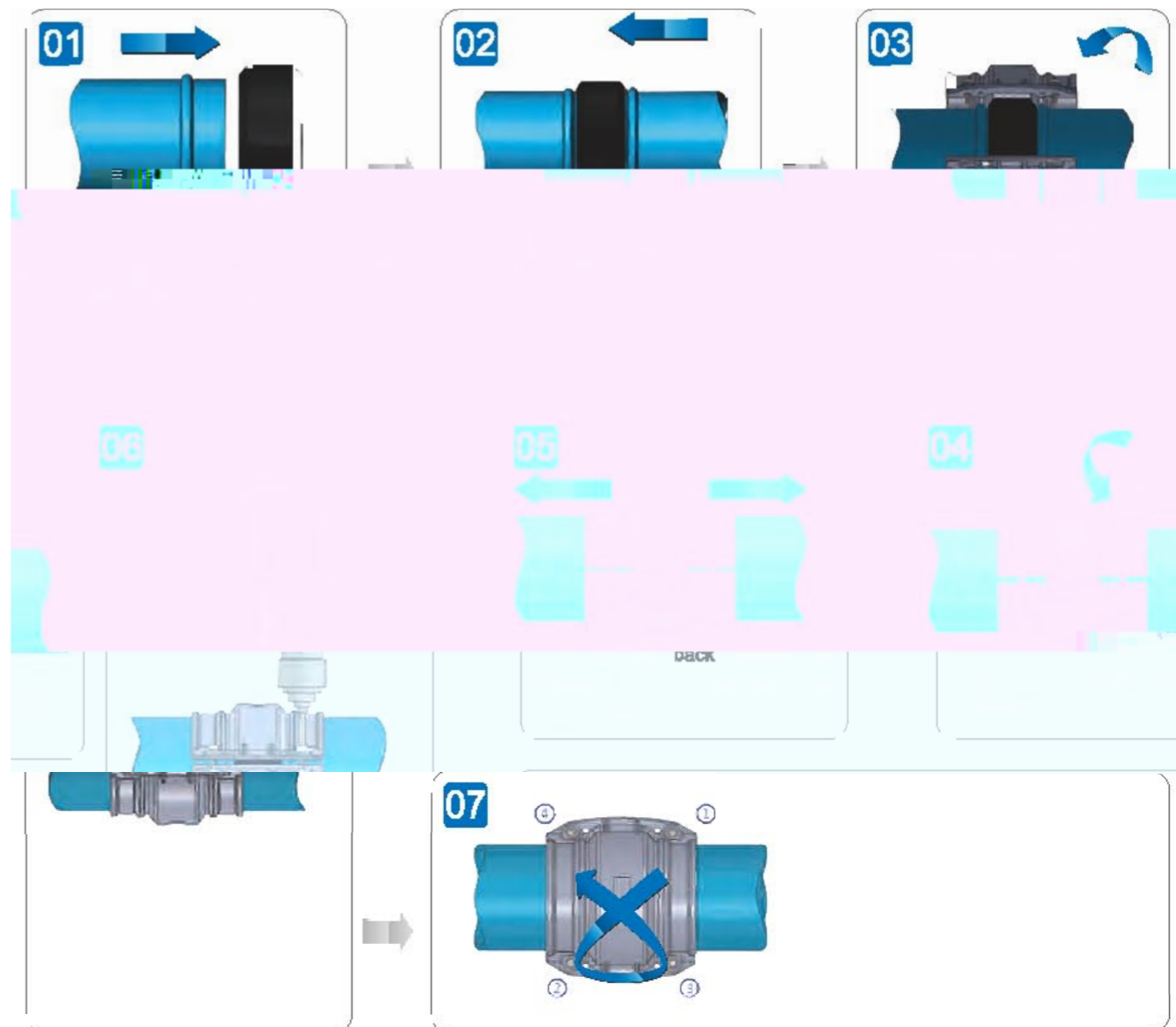
Installation Guide for DN20-DN50



Deburr & Clean The Outer and Inner Edges Before Installation



Installation Guide for DN63-DN200



Hand-held hydraulic lugging machine operation requirements



Manually open the jaws of the clamp and insert the aluminum pipe into the clamp as far as possible.

Release the jaws. Press the trigger and crimp the pipe until a "snap" sound is heard.

Re-open the two jaws to remove the pipe and rotate the pipe slightly. Put the jaw side to the mark position.

Renew the operation until the required minimum number of lugs for each diameter is finished.

Number of lugs for each diameter:

AIRPIPE	DN63	DN80	DN100	DN150	DN200
	5	6	6	6	2

Note: Do not overlap the lug!

DN	H(mm)
63	3.0-3.3
80	3.0-3.3
100	3.0-3.3
150	3.0-3.3
200	3.0-3.3

Sizing Chart for Quick Drops

DN	Drill Hole	DN	Quick Drop (PN)
301 35 0005 01	301 35 0006 02	φ15	302 10 0201 04, 302 10 0202 08, 302 11 0200 03, 302 11 0401 03
301 35 0005 01	301 35 0006 02	φ22	302 10 0401 04, 302 10 0402 04, 302 11 0400 03, 302 10 0602 01, 302 10 0701 01, 302 10 0702 01
301 35 0005 01	301 35 0006 03	φ26	302 10 0801 01, 302 10 0802 01, 302 10 0801 01, 302 10 1002 01, 302 10 1102 01
301 35 0005 01	301 35 0006 03	φ26	302 10 0801 01, 302 10 0802 01, 302 10 1001 01, 302 11 0301 01, 302 11 0700 01, 302 11 0701 01
301 35 0005 02	301 35 0006 04	φ28	302 11 0500 01, 302 11 0501 01, 302 11 0900 01
301 35 0005 02	301 35 0006 04	φ28	302 10 0804 01
301 35 0005 02	301 35 0006 05	φ31	302 10 1004 01, 302 10 1006 01, 302 10 1104 01, 302 10 1105 01

- The following table is based on a closed-loop pipe system.
- Working pressure is 8bar and pressure drop is 0.4bar, flow speed not taken into account.

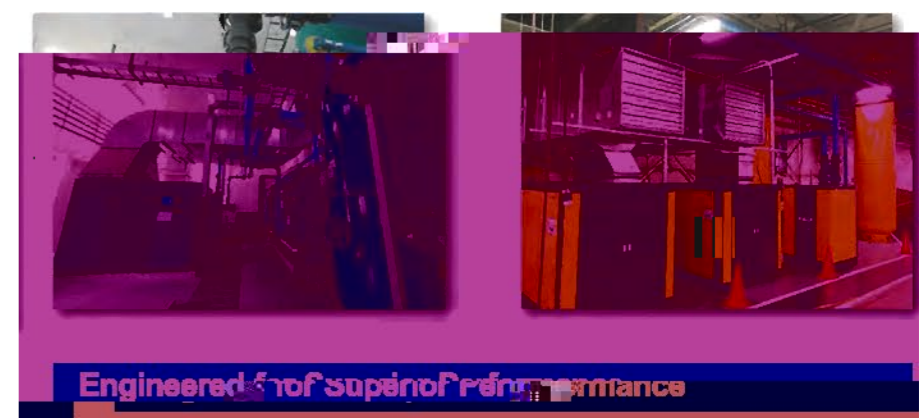
Flow N m ³ /h	Length									
	50M	100M	150M	300M	500M	750M	1000M	1300M	1600M	2000M
10	20	20	20	20	20	20	20	25	25	25
30	20	20	20	25	25	25	25	25	25	40
50	20	25	25	25	25	25	25	40	40	40
70	25	25	25	25	40	40	40	40	40	40
100	25	25	25	40	40	40	40	40	40	50
150	25	40	40	40	40	40	40	50	50	50
250	40	40	40	40	50	50	50	50	50	50
350	40	40	40	50	50	50	50	50	50	50
500	40	40	50	50	50	50	50	50	50	50
750	40	50	50	50	50	50	50	50	50	50
1000	50	50	50	50	50	50	50	50	50	50
1250	50	50	50	50	50	50	50	50	50	50
1500	50	50	50	50	50	50	50	50	50	50
1750	50	50	50	50	50	50	50	50	50	50
2000	50	50	50	50	50	50	50	50	50	50
2500	50	50	50	50	50	50	50	50	50	50
3000	50	50	50	50	50	50	50	50	50	50
3500	50	50	50	50	50	50	50	50	50	50
4000	50	50	50	50	50	50	50	50	50	50
4500	50	50	50	50	50	50	50	50	50	50
5000	50	50	50	50	50	50	50	50	50	50
5500	50	50	50	50	50	50	50	50	50	50
6000	50	50	50	50	50	50	50	50	50	50
6500	50	50	50	50	50	50	50	50	50	50
7000	50	50	50	50	50	50	50	50	50	50
7200	50	50	50	50	50	50	50	50	50	50
8000	50	50	50	50	50	50	50	50	50	50
8500	50	50	50	50	50	50	50	50	50	50
10000	50	50	50	50	50	50	50	50	50	50
12000	50	50	50	50	50	50	50	50	50	50

Technical Specifications

- Max. working pressure: 15bar (-20°C~ +80°C), 16bar (-20°C~ +45°C)
Max. working pressure for DN200 is 13bar.
- Vacuum: 1mbar (absolute pressure).
- Working temperature: -20°C ~ +80°C.
- Suitable fluids: compressed air, oil-free or lubricated, wet, vacuum, inert gases.
- Fireproof and suitable for outdoor applications.

Qualification & Standards

2014/68/EU, ASME B31.1, TUV, GB/T4437.1-2000, EN755-8, TS, U64, ISO 8573-1



- We are committed to provide superior products and service.
- R&D is a continuous process linked to real-world conditions & market feedback.
- Always customer oriented, from design production to sales and service.



we are at your **SERVICE**

